

DOCUMENTS NECESSARY TO THE SERVICE

DOCUMENTS REQUIRED:

- **Diagnosis of Specific Learning difficulties** pursuant to Law 170/2010, issued by the National Health Service, or by authorised private centre or by a private specialist, accompanied by a document of conformity from the Local Health Authority (ASL). It must not be more than 3 years old or it has to be issued after the student had reached the age of 18.
- **Certificate of non-Specific Learning Disorders** (LD)
- **Diagnosis certifying Special Educational Needs** (SEN)

EXAM ADJUSTMENTS :

- You must send the required documents to our e-mail and have a preliminary interview.

Afterwards you can:

- Write the professor an e-mail and c.c. us or visit him/her during the office hours.
- Ask for our mediation in order to explain your needs to the professors.

Service for Students with Specific Learning

Difficulties:

Contact persons:

Bologna Campus:
Valentina Di Trapani

Elisa Ferrini

Marta Nicotra

dislessia@unibo.it

Romagna Campus:

Sara Beltrammi

Luigi Palmirota

Luisa Plachesi

ssdd.campusromagna@unibo.it

For digital books requests only:

abis.testidigitali@unibo.it

**CALL US FOR
A PRELIMINARY
INTERVIEW!**

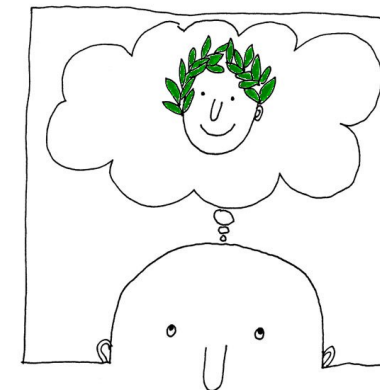


ALMA MATER STUDIORUM
UNIVERSITA DI BOLOGNA

ADAPTATIONS FOR STUDENTS WITH SPECIFIC LEARNING DIFFICULTIES

Useful information for students

Specific learning difficulties:
Dyslexia, Dysortography,
Dysgraphia, Dyscalculia.



COMPENSATORY INSTRUMENTS FOR THE EXAMS

- digital exams;
- PC with spell checker and/or grammar checker and/or voice synthesis programmes;
- readers (the service is provided by peer mentors);
- calculator;
- use of concept maps or schemes by key word;
- use of table, formulary, timelines, glossary.



Adaptations for exam **have to be defined along with the professor, and have to be asked in advance.** **No exam programme reductions are allowed:** the student has to reach the same learning outcomes expected for the rest of the class, the only difference is that this target is proved by a different checking mode, more accessible for him\her.

DISPENSATIVE MEASURES FOR THE EXAMS

- 30% extra time for written exams;
- split the exam in different parts;
- change an oral exam into a written one, or the opposite;
- different exam mode (ex: open questions instead of multiple choices)
- consider the content, but not the form, during exam evaluation;
- consider the procedures used instead of the results, during exam evaluation.

Each student with specific learning difficulties is unique, so that it is necessary to define personalized solutions, **even considering the specific features of each Degree Programme.**

TO STUDY, YOU CAN ALSO ASK:

The service for Students with disability:

- Help to have digital books or accessible digital learning materials, if you need it;
- peer mentor;
- to arrange a presentation of some learning technology.

The Professors:

- slide or other learning material either on paper or digital;
- mock exams; samples examinations; past exam questions and sample answers;
- a meeting to review the exam and discuss the mistakes.

If you want to study or have group study sessions, even by using assistive technology, you can go to Tecnolab (via Zamboni 38).

LESSONS:

You can ask the professor to record lessons or take pictures or videos.